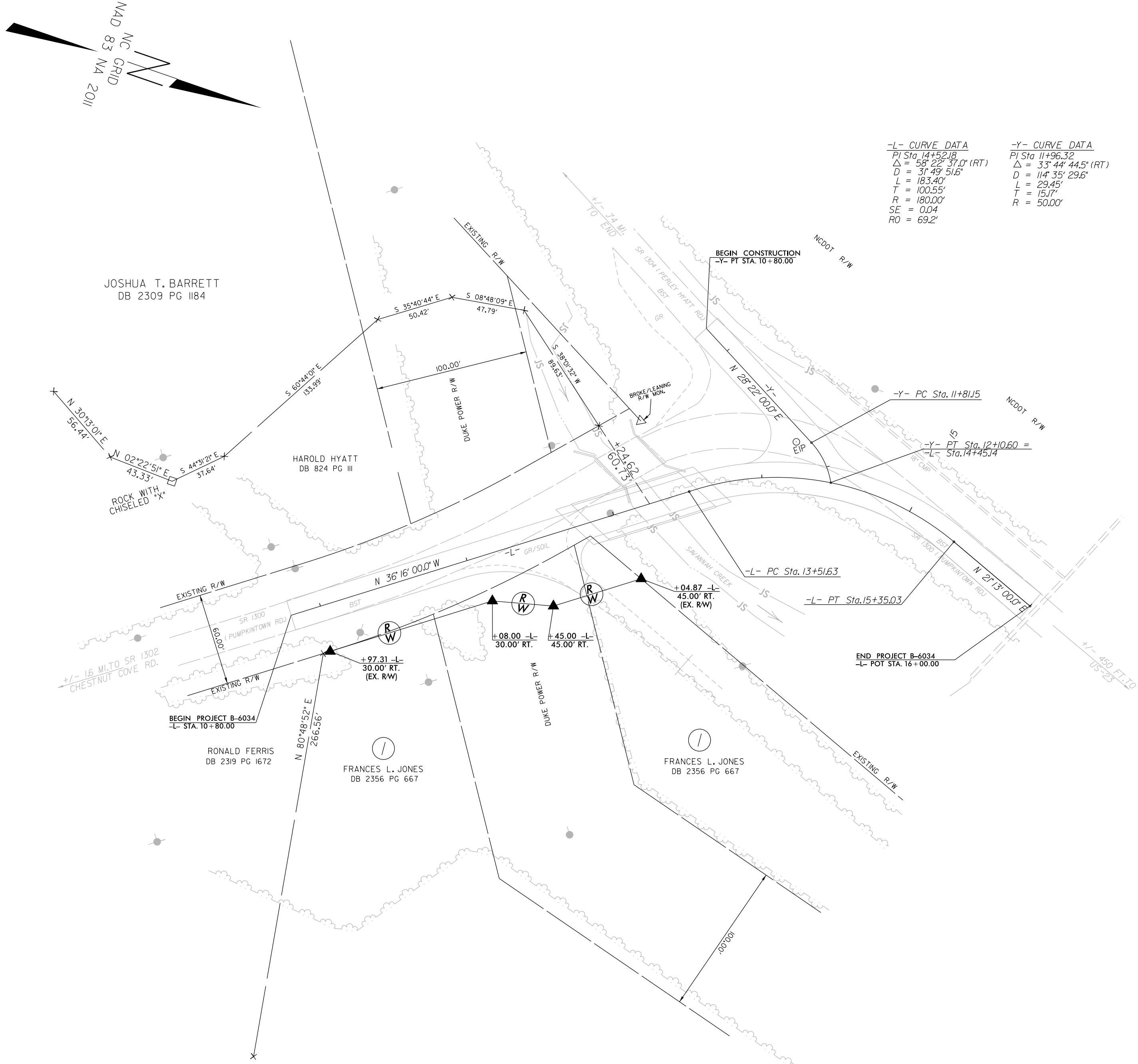


REVISIONS



<u>-L- CURVE DATA</u> PI Sta. 14+52.18 Δ = 58°22'51.0" (RT) D = 31°45' 51.6" L = 183.40' T = 100.55' R = 180.00' SE = 0.04 RO = 69.2'	<u>-Y- CURVE DATA</u> PI Sta. 11+96.32 Δ = 33°44' 44.5" (RT) D = 114°35' 29.6" L = 29.45' T = 15.07' R = 50.00'
---	---

I, Brian Barwatt, certify that the right of way and permanent easement monumentation for this project shown herein was completed under my direct and responsible charge from an actual survey made under my supervision; that all horizontal closures had a minimum ratio of precision of 1:10,000 (Class A). Field work was performed on May 13th, 2025, and all coordinates are based on NAD83/2011. That this survey was performed to meet the requirements of 21NCAC 66.1600 as applicable.

This 3rd day of December, 2025.

DocuSigned by:  
*Brian Barwatt*  
A6300FEE6A8A8A6E

Professional Land Surveyor L-4727

NOTES:

1. IF FURTHER INFORMATION REGARDING PROJECT CONTROL IS NEEDED PLEASE CONTACT THE LOCATION AND SURVEYS UNIT.
2. PROJECT CONTROL WAS ESTABLISHED USING GNSS, THE GLOBAL NAVIGATION SATELLITE SYSTEM.
3. RIGHT OF WAY MONUMENTATION ESTABLISHED ON MAY 13TH, 2025.